



www.msschippers.com

MS ANIMAL ID

CATALOG

2016 - 2017

MS Schippers

Passion for Farming

Foreword

Dear Schippers customer,

In modern farming, business success often lies in the details. Ability to make decisions based on actual (animal) information is becoming more important every day. Having a good insight and making modifications “as and when necessary”, requires reliable and efficient data collection and recording, and the necessary focus on each section of the business. MS Animal ID offers a good basis for that, through a sustainable identification system.

At MS Schippers, we work with you, keeping focus on specific parts of your business from our specialised product categories. In addition to a full package of materials and services, we offer added value in the form of practical targeted advice, which you can always fall back on while running your agricultural business.

We are happy to present you with our Animal ID product category’s new catalogue.

The catalogue is packed with long-standing quality products, plus many new articles – a selection that ensures that you will always have good and appropriate animal identification materials for life lasting applications from farm to fork.

As a food producer, there are constantly greater expectations of you, regarding provision of quality and safety insight and guarantees. Besides animal welfare, consumers are becoming more critical about food safety. Recording individual animal treatments and ensuring a reliable ‘Track and Trace’ system forms the basis for maintaining consumer confidence, both nationally and internationally.

In addition, there are advantages for you. Electronic animal identification is not only efficient but also results in less stress and errors when writing up records. Coupling electronic identification directly to animal data processing or requests, ensures that your colleagues are always up to date! In addition, it makes automated animal identification, various processes and automatic data processing, throughout the complete chain, possible. Having the data presented to you in a well thought out manner enables you to make sharp analysis and to take action immediately, when necessary. This makes the difference between winners and losers!

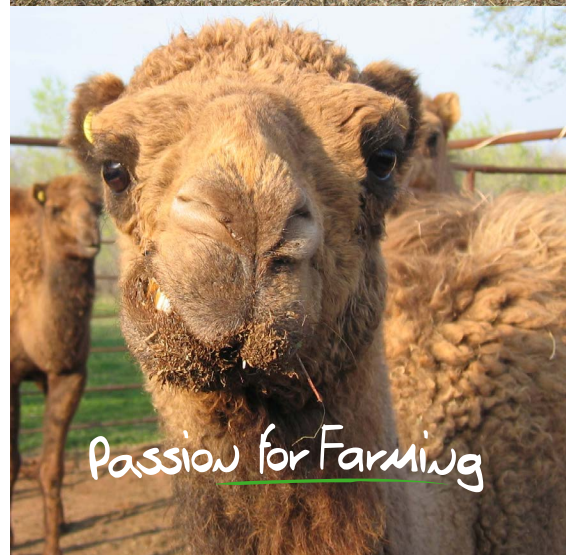
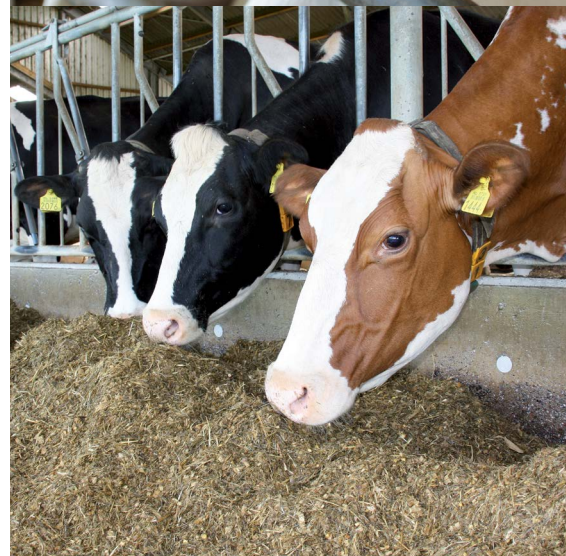
Let this catalogue be your guide through the variety of possible animal identification options you can apply. In addition to our wide range of materials, our animal identification specialists are ready to help you, with appropriate and practical advice. Don’t hesitate to use them!

Please request a sample bag, to help you get a good picture of the various ear tag options.

Best Regards,
MS Animal ID

Peter Beljaars, product manager
p.beljaars@schippers.eu

Robert Whittington, international sales manager
r.whittington@schippers.eu



MS Animal ID

Passion for Farming



MS Schippers

Company profile

The Schippers Group is an innovative, international marketing organization for professional livestock farmers. MS Schippers is a family run business with "Passion for Farming". Schippers provides a complete package of tools and services to properly manage a farm. This complete package in combination with the specialized product divisions makes Schippers a reliable partner with added value that agricultural entrepreneurs can always rely on. In this way, Schippers wants to optimize the operating efficiency of a farm, together with the agricultural entrepreneur. The proactive and service-oriented attitude to farmers is still the great strength of the entire Schippers Group.

The company has become one of the largest suppliers to the farmer. A professional company with nine sales offices in Europe and operating worldwide in 40 countries with more than 250 employees. The current success of Schippers is due to its innovative and flexible attitude and the constant drive to improve and develop products that can be used in the daily practice.

The headquarters of Schippers is located in Bladel (The Netherlands). The distribution centre is centrally located in Lommel (Belgium), from where each establishment and each international partner is supplied. Due to the extensive network of distribution, we can supply the orders customized to our clients, nationally and internationally. Every day more than 30 employees are working in Lommel in order to make sure that your order is delivered properly and on time.

Passion for Farming



Table of contents



Foreword	2
MS Schippers	3
Table of content	4
Legend	5
Ear tag production facility	6

Visual ear tags 7

MS Tag Little (small insertion pin)	7
MS Tag Round.....	8
MS Tag Torbogen	9
MS Tag Midi	10
MS Tag Standard.....	11
MS Tag Medium.....	12
MS Tag Jumbo	13

Electronic identification 14

FDX- transponders	14
HDX- transponders	15
UHF- transponders	16
Transponder sets.....	17
o Sheep, goats & camels	17
o Cattle	18
Microchips (Glas transponders)	19

Applicators and spare parts 20

Visual eartags	20
Electronic eartags	20
Spare parts	20

Marking products 21

Intermediate plate	21
Marking Stick.....	21
Marking Spray.....	21
Neck Straps and Identification numbers	23
Ankle straps	24

RFID readers 25

Handreaders.....	25
Stickreaders	26

Weighing Systems 27

Automatic weigher "The MS Pigscale"	27
Mobile weighers.....	29
Group weighers	31

Legend

Packaging possibilities



Bulk



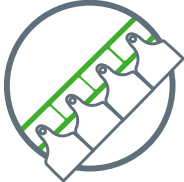
Plastic bag



Cart



Set of 5



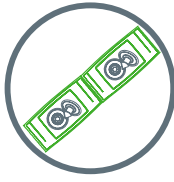
Strip



Tray



Chain



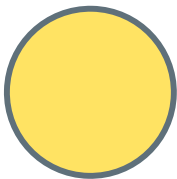
Chainbag

Advice animal type*

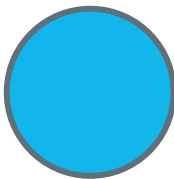


*Advice animal type: feel free to combine or choose the tags you prefer

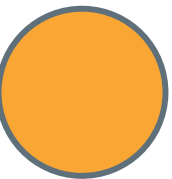
Available in following Colors:



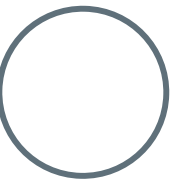
Yellow



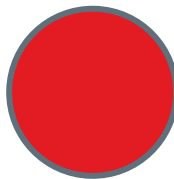
Blue



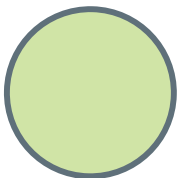
Orange



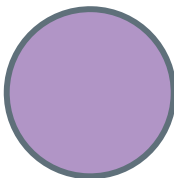
White



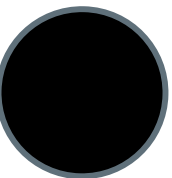
Red



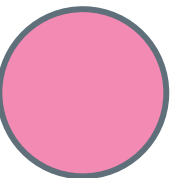
Green



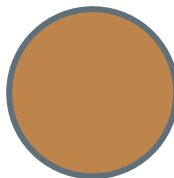
Purple



Black



Pink



Brown

Ear tag production facility

Since 2008, MS Schippers is producing their own "MS Tag" ear tags for pigs, sheep, goats, camels, deer and cattle. The MS Tag ear tags, are finding their way all over the world and are being used by thousands of satisfied farmers. Our own MS Tag ear tags are produced on the same location as you find the MS Schippers head office in Bladel, The Netherlands. This provides us with "shortline" communication with the people of production, quality control and dispatch, which benefits our customers in a quick and faultless delivery of our premium "MS Tag" ear tags.

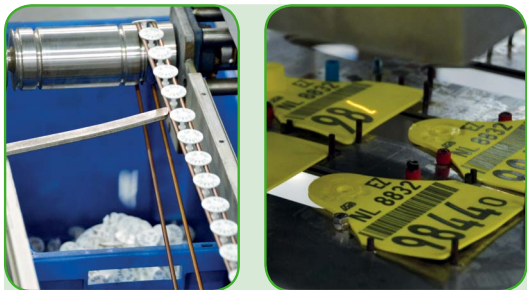
Production of a "MS Tag" ear tag



High quality polyurethane and ground materials



Fast delivery from stock



Customized laser printing



MS tag on chain, card, tray, bag or lose on its way to a satisfied customer



Modern moulding machinery



Ongoing monitoring of the quality



Programming and printing of electronic transponders

Visual ear tags

MS Tag little

The MS Tag Little is an ear tag for piglets, equipped with a thin insertion pin that enables trouble-free tagging of your piglets. Application advice on age of day 1 till 7 after birth.

Advantages of the MS Tag Little:

- 30% lighter so easier to apply
- Creates a smaller wound thereby reducing stress on animal during insertion
- Smaller wound improves healing process
- Loss of ear tags is almost none



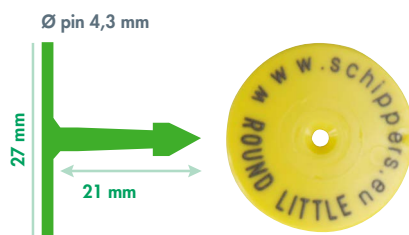
MS Tag Little



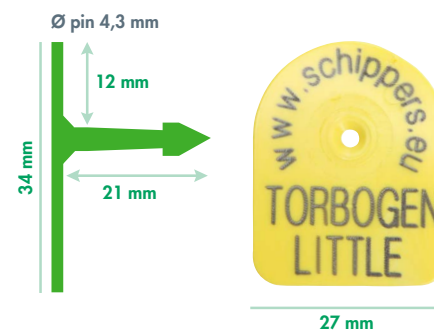
Standaard pin

Characteristics of the MS Tag Little:

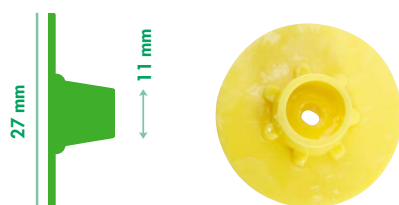
- Made of polyurethane
- Available in blank or printed
- Minimum order quantity 100 pieces / 2000 pieces on chain
- Apply with the MS Tag applicator 0409824 or 0409303
- Application within Tagmatic concept
- Insertion pin for applicator (0409823)
- MS Tag little ear tags don't contain UV resistant material



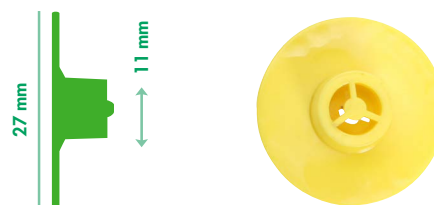
0409821 blank / 0409820 printed
MS Tag Round little



0409905 blank / 0409909 printed
MS Tag Torbogen little



0409822 blank
MS Tag Round Little open



0409826 blank / 0409827 printed
MS Tag Round Little closed



The MS Tag Little ear tag can be combined with a female electronic ear tag, allowing digital identification from the day of birth (FDX ear tag 0409215 or UHF ear tag 0409786). See page 14 and 16 for more information about electronic identification.

MS Tag Round

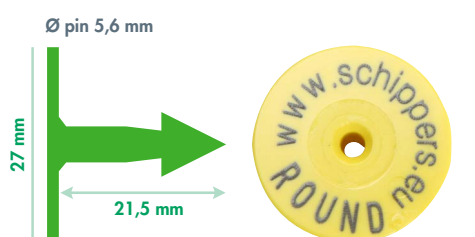


The MS Tag Round is an ear tag developed for pigs, cattle and sheep. The MS Tag Round is also available with a metal tip for application by older animals. The standard tip of the male part is compatible with all MS Tag female parts, except the MS tag little. Round female parts are available in an open or closed version.

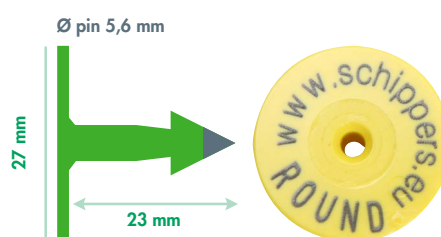
Characteristics of the MS Tag Round:

- Made of polyurethane
- Equipped with a sharp plastic or metal point for trouble free tagging
- Male parts available in blank or laser printed
- Open female parts always blank, closed female parts blank or printed
- Minimum order quantity 100 pieces
- Apply with the MS Tag applicator 0409894 or 0409302
- Insertion pin for applicator (0409712)
- MS Tag Round ear tags don't contain UV resistant material, unless upon special request.

Male parts



0409865 blank / 0409853 printed
MS Tag Round plastic tip



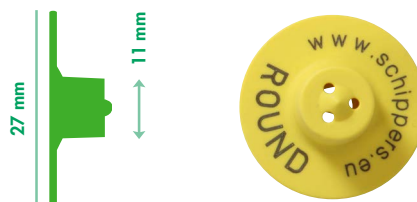
0409852 blank
MS Tag Round metal tip



Female parts



0409897 blank
MS Tag Round open



0409854 blank / 0409847 printed
MS Tag Round closed



* Soon available in chainbag



The MS Tag Round ear tag can be combined with a female electronic ear tag, allowing digital identification. FDX or HDX low frequency transponders or Ultra High Frequency transponder 0409782. See page 14 - 15 -16 and 17 for more information about electronic identification.

MS Tag Torbogen

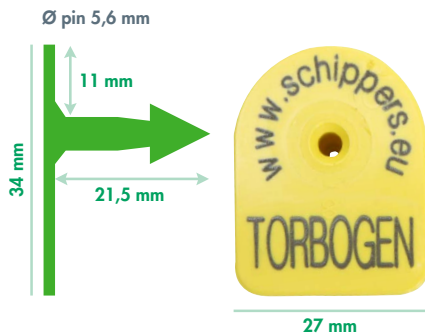


The MS Tag Torbogen is mostly used for pigs, sheep and goats. The standard tip of the male part is compatible with all MS Tag female parts, except the MS tag little. MS Tag Torbogen is mostly used for identification of breeding animals such as young breeding gilts.

Characteristics of the MS Tag Torbogen:

- Made of polyurethane
- Equipped with a sharp plastic tip for trouble free tagging
- Both parts available in blank or laser printed
- Minimum order quantity 100 pieces
- Apply with the MS Tag applicator 0409894 or 0409302
- Insertion pin for applicator (0409712)
- MS Tag Torbogen ear tags don't contain UV resistant material, unless upon special request.

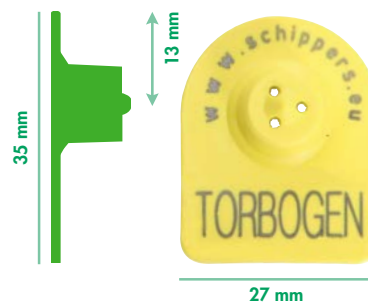
Male part



0409860 blank / 0409878 printed
MS Tag Torbogen plastic tip



Female part



0409877 blank / 0409859 printed
MS Tag Torbogen



* Soon available in chainbag

The MS Tag Round ear tag can be combined with a female electronic ear tag, allowing digital identification. FDX or HDX low frequency transponders or Ultra High Frequency transponder 0409782.

See page 14 - 15 - 16 and 17 for more information about electronic identification.



MS Tag Midi

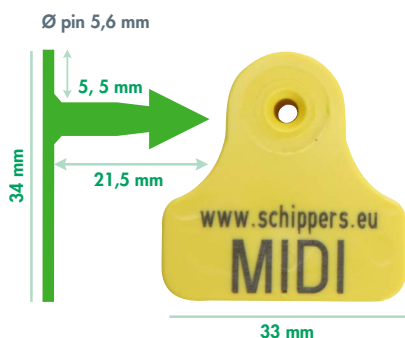


The MS Tag Midi is an ear tag specially developed for sheep, goats, camels and deer but of course also applicable to pigs and cattle. The standard tip of the male part is compatible with all MS Tag female parts, except the MS tag little. MS Tag Midi is produced out of the best quality polyurethane, with a high UV-resistance and an excellent flexibility that secures high retention rates.

Characteristics of the MS Tag Midi:

- Made of high-quality polyurethane
- Equipped with a sharp plastic tip for trouble free tagging
- Both parts available in blank or laser printed
- (Electronic) sets deliverable in easy2use "chainbag" packaging
- Minimum order quantity 50 pieces
- Apply visual sets with the MS Tag applicator 0409894 or 0409302
- Apply both visual and electronic sets with the MS Tag applicator 0409840 or 0409302
- Insertion pin for applicator (0409712)

Male part



0403550 blank / 0403552 printed
MS Tag Midi plastic tip



Female part



0403551 blank / 0403553 printed
MS Tag Midi



Within the Dutch electronic identification program for sheep and goats, the government checked the loss percentage of our "MS Tag Midi EID" ear tags from 298.000 animals over a period of 2 years. A lowest **0,64%**, as best result! More details about electronic identification and the MS Tag Midi EID sets, please see page 14



MS Tag Standard

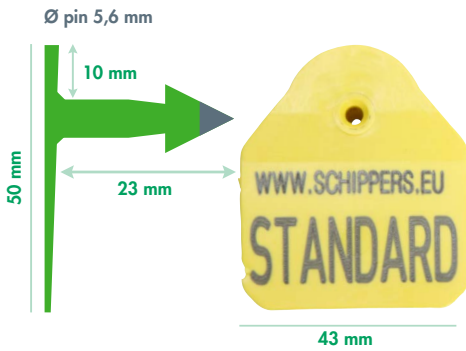


The MS Tag Standard is an applicable ear tag for sows, cattle, sheep, goats and deer. The standard metal tip of the male part is compatible with all MS Tag female parts, except the MS tag little. The MS Tag Standard combines very well with our FDX / HDX or UHF transponders. This combination provides the farmer visual identification of the animal in the group and trouble free identification from the animal in feeding-, weight- or selection stations.

Characteristics of the MS Tag Standard:

- Made of polyurethane
- Equipped with a sharp metal tip for trouble free tagging
- Both parts available in blank or laser printed
- Minimum order quantity 50 pieces
- Apply visual sets with the MS Tag applicator 0409894 or 0409302
- Apply electronic sets with the MS Tag applicator 0409840 or 0409302
- Insertion pin for applicator (0409712)

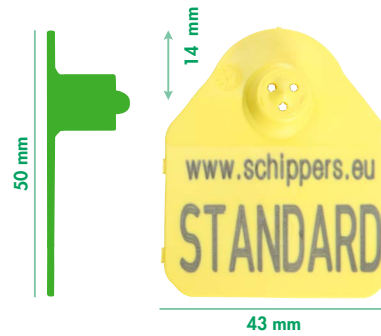
Male part



0409864 blank / 0409858 printed
MS Tag Standard metal tip



Female part



0409868 blank / 0409861 printed
MS Tag Standard



MS Tag Medium

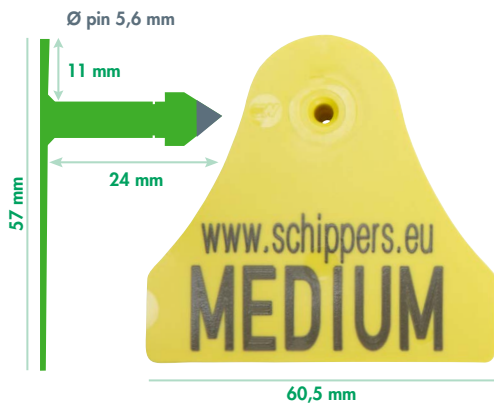


The MS Tag Medium is an applicable ear tag for sows, cattle and deer. The standard metal tip of the male part is compatible with all MS Tag female parts, except the MS tag little. MS Tag Medium is produced out of the best quality polyurethane, with a high UV-resistance and an excellent flexibility that secures high retention rates. The MS Tag Medium ear tag is approved in many different countries around the world.

Characteristics of the MS Tag Medium:

- Made of high-quality polyurethane
- Equipped with a sharp metal tip for trouble free tagging
- Both parts available in blank or printed
- (Electronic) sets deliverable in easy2use "strip" or "chainbag" packaging
- Minimum order quantity 1 piece
- Apply visual sets with the MS Tag applicator 0409894 or 0409302
- Apply electronic sets with the MS Tag applicator 0409711 or 0409302
- Insertion pin for applicator (0409712)

Male part



0402050 blank / 0402060 printed
MS Tag Medium metal tip



Female part



0402051 blank / 0402061 printed
MS Tag Medium



The MS Tag Medium ear tag can be combined with a female electronic transponder, allowing digital identification. FDX or HDX low frequency "super" transponders. See page 14 and 15 for more information about electronic identification.



MS Tag Jumbo



The MS Tag Jumbo is an applicable ear tag for cattle. The standard metal tip of the male part is compatible with all MS Tag female parts, except the MS tag little. MS Tag Jumbo is produced out of the best quality polyurethane, with a high UV-resistance and an excellent flexibility that secures high retention rates. The MS Tag Jumbo ear tag is approved in many different countries around the world.

Characteristics of the MS Tag Jumbo:

- Made of high-quality polyurethane
- Equipped with a sharp metal tip for trouble free tagging
- Both parts available in blank or printed
- (Electronic) sets deliverable in easy2use "strip" or "chainbag" packaging
- Minimum order quantity 1 piece
- Apply visual sets with the MS Tag applicator 0409894 or 0409302
- Apply electronic sets with the MS Tag applicator 0409711 or 0409302
- Insertion pin for applicator (0409712)

Male part



0402055 blank / 0402062 printed
MS Tag Jumbo metal tip



Female part



0402056 blank / 0402063 printed
MS Tag Jumbo



The MS Tag Jumbo ear tag can be combined with a female electronic transponder, allowing digital identification. FDX or HDX low frequency "super" transponders. See page 14 and 15 for more information about electronic identification.



Electronic identification

FDX- transponders



Full Duplex Transponder according ISO 11784/11785 standards and ICAR approved. Part of a complete set together with the MS Tag Little male part for piglets, MS Tag Midi for sheep, goats, deer or camels, MS Tag Standard and MS Tag Medium for sows and cattle and MS Tag Jumbo for cattle. MS Tag transponders allow you to identify the animals from the day of birth. You can use either or both electronic hand reading devices and stationary. Using electronic hand reading devices or stationary readers in various controlled processes in the barn. MS Quick transponders combines robust, fault proof and durable materials with excellent readability.

Characteristics:

- Programmed according to ISO standards 11784/11785
- ICAR registered
- FDX-B
- Frequency is 134,2 kHz
- Manufactured with high quality inlay and durable materials
- 25,5 mm diameter
- Weight 3,95 gram / 5,95 gram (Super Transponder)
- Apply with the MS Tag applicator 0409711 or 0409302
- Insertion little pin for applicator (0409823) or normal pin for applicator (0409712)



0409215 programmed and printed MS Quick Transponder Little FDX-b. Tamper proof
0409457range Country specific programming



0409515 programmed and printed MS Quick Transponder FDX-b. Tamper proof
0409458range Country specific programming



0409315 programmed and printed MS Quick Transponder Super FDX-b. Tamper proof
0409856range Country specific programming



Male parts to combine with:



0409821 blank / 0409820 printed MS Tag Round little



0409905 blank / 0409909 printed MS Tag Torbogen little



Male parts to combine with:



0409853 printed / 0409852 blank MS Tag Round plastic / metal tip



0409878 printed MS Tag Torbogen plastic tip



0403550 blank / 0403552 printed MS Tag Midi plastic tip



0409864 blank / 0409858 printed MS Tag Standard metal tip



0402050 blank / 0402060 printed MS Tag Medium metal tip



0402055 blank / 0402062 printed MS Tag Jumbo metal tip

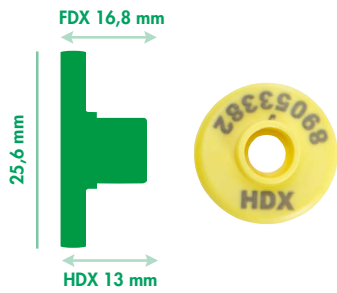
HDX- transponders



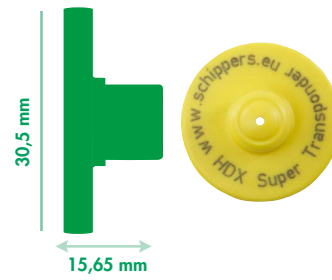
The open or Super Half Duplex MS Quick HDX Transponder combined with the MS Tag Standard or MS Tag Medium for sows is often used for group housed sows with automatic feedings stations. It provides a re-use possibility through the open cap of the transponder. Functions according to ISO 11784/11785 standards.

Characteristics:

- Programmed according to ISO standards 11784/11785
- MS ICAR registered
- MS Quick transponder super HDX
- Frequency is 134,2 kHz
- Manufactured with high quality inlay and durable materials
- 25,5 or 30,5mm diameter
- Weight 3,85 gram / 5,95 gram (Super Transponder)
- Apply with the MS Tag applicator 0409840, 0409711 or 0409302
- Insertion pin for applicator (0409712)



0409715 programmed and printed MS Quick Transponder HDX. Open cap



0409415 programmed and printed MS Quick Transponder Super HDX. Tamper proof
0409455range Country specific programming



Male parts to combine with:



0409853 printed / 0409852 blank MS Tag Round plastic / metal tip



0409878 printed MS Tag Torbogen plastic tip



0403550 blank / 0403552 printed MS Tag Midi plastic tip



0409864 blank / 0409858 printed MS Tag Standard metal tip



0402050 blank / 0402060 printed MS Tag Medium metal tip



0402055 blank / 0402062 printed MS Tag Jumbo metal tip

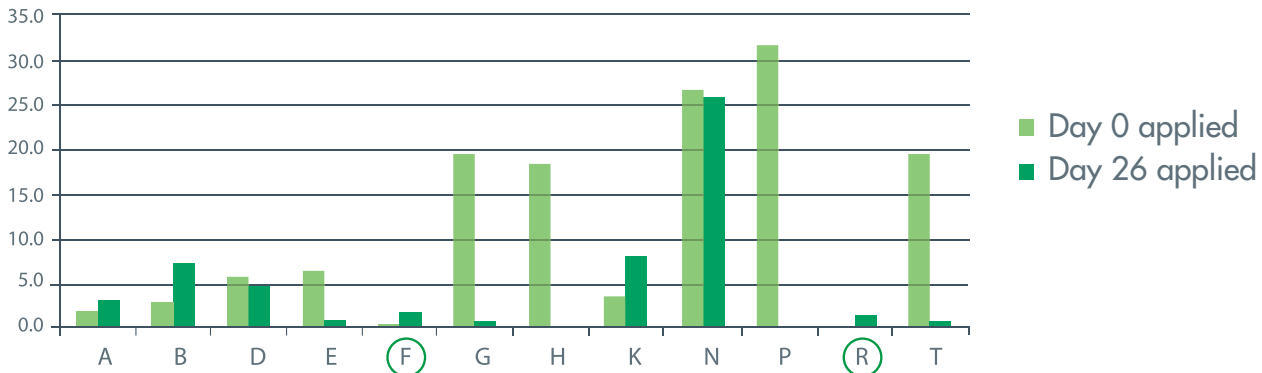


UHF- transponders

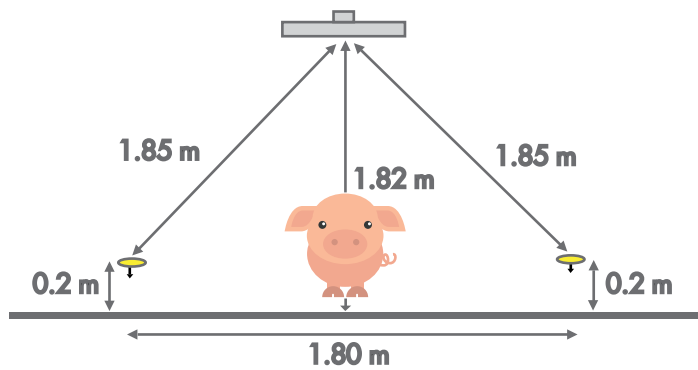
Ultra High Frequency is a fairly new form of electronic identification. It's being used on a limited scale for cattle and also on pigs. The benefits of the UHF technology are huge because of its weight, flexible reading range, multiple reading option and fairly interesting pricing. We see it being used more and more in pig farming.

A practice test of RFID eartags on the Pig Research Centre at Sterksel in the Netherlands, showed that the combination of the "little" UHF tags together with the MS tag Little Round and MS Tag Little Torbogen is the best combination regarding overall performance of the 12 different RFID tags in the test :

% of lost / not readable ear tags after 150 days after application



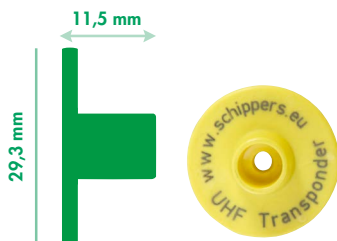
F = UHF Little with MS TAG Round little
R = UHF Little with MS TAG Torbogen little



Reading range of UHF tagged animal by stationary UHF reader

Characteristics UHF- transponders:

- Interface Protocol: ISO 18006-6C EPC Class 1 Gen 2
- Frequency: 868 MHz
- Use of robust and durable materials
- Unique programmed number or custom programmed on demand
- Laser printed
- Excellent readability
- Can be read both individually and in groups (depending on the setting and the type of the reading device)
- The weight of the transponder is 2,80 gramm
- Not suitable for identification in feed stations!
- Sold per 30 pieces



0409786 programmed and printed MS Tag UHF Little Transponder

Both ISO 18006-6C EPC Class 1 Gen 2 • 868 MHz. Other colours possible on request.



Male parts to combine with:

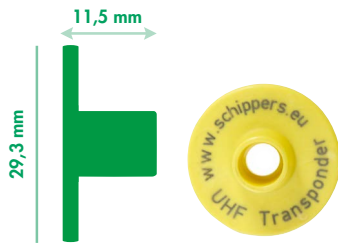


0409821 blank / 0409820 printed MS Tag Round little



27 mm
0409905 blank / 0409909 printed MS Tag Torbogen little

See pag. 7 for all MS Tag little information



0409782 programmed and printed MS Tag UHF Transponder

Both ISO 18006-6C EPC Class 1 Gen 2 • 868 MHz. Other colours possible on request.



Male parts to combine with:



0409853 printed / 0409852 blank MS Tag Round plastic / metal tip



0403550 blank / 0403552 printed MS Tag Midi plastic tip



0409878 printed MS Tag Torbogen plastic tip



0409864 blank / 0409858 printed MS Tag Standard metal tip

Transponder sets Sheep, Goats and Camels



0409830 MS Midi EID set

MS Midi EID set, according ISO 11784/ 5 standards, consist of 1 MS Quick transponder FDX-b, 2 MS Tag Midi male parts and 1 MS Tag Midi female part. Packed in series for easier distribution or management. Deviating from standard other colors or printing / programming negotiable.



Characteristics MIDI EID set:

- MS Tag Midi see page 10
- MS Quick transponder FDX-b see page 14



Within the Dutch electronic identification program for sheep and goats, the government checked the loss percentage of our "MS Tag Midi EID" ear tags from 298.000 animals over a period of 2 years. A lowest 0,64%, as best result!

0401367 MS Schiptag EID set



ICAR APPROVED!

Coming soon!

The electronic FDX-b part, that is inside one of the female parts, has a small oval encapsulated antenna. MS Schiptag EID set consist of 1 female e-tag, two male parts and 1 female part.

Deviating from standard other colors or printing / programming negotiable. The eartag can be applied using the MS Applicator.



Characteristics MS Schiptag EID set:

- According ISO 11784/ 5 standard
- Weights
 - o Male part: 1,25 gram
 - o Female part EID: 4,04 gram
 - o Female part: 1,88 gram.
- Dimensions:
 - o Male part: 46,6 x 14,6 mm
 - o Female part: 46,6 x 14,6 mm
- The distance between male and female part in closed situation is 9 mm
- Printing digit size: 7 mm
- Packed per 50 pieces in a box

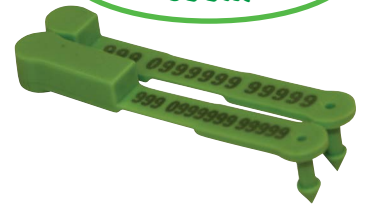


0408926 MS Clip EID set

The "one-piece" MS Clip EID set ear tag is suitable for use mostly on young lambs. The ear tag consists of 1 electronic and 1 visual ear tag part. Deviating from standard other colors or printing / programming negotiable. The eartag can be applied using the MS Clip Applicator.

Characteristics MS Clip EID set:

- One-piece ear tag
- Laser printed
- Electronic transponder FDX-b, encapsulated
- According ISO 11784/ 5 standard
- Weights
 - Electronic ear tag part: 3 gram
 - Visual ear tag part: 1 grams
- Dimensions
 - Electronic ear tag part: 76,2 x 11 x 18 mm
 - Visual ear tag part: 76,2 x 11 x 18 mm
- Distance between the male and female ear tag parts when closed: 9 mm
- Printing digit size: 4 mm
- Packed per 50 pieces in a box

**ICAR
APPROVED!****Coming
soon!****Transponder sets Cattle**
0402016 MS Tag Medium FDX pair
0402017 MS Tag Medium HDX pair

Visual and electronic ear tag pair for cattle.
Packed in series for easier distribution or management.
Deviating from standard other colors or printing / programming negotiable.
The eartag can be applied using the MS Applicator.

**Characteristics MS Tag Medium FDX-b / HDX pair:**

- Dimension male part 57 x 60,5 mm
- The transponder has a diameter of 30,6 mm
- Weight pair 10,4 gram
- The pin of the male part (length 24 mm) is equipped with a metal point for trouble-free tagging
- The ICAR approved low frequency transponder complies with the ISO Standard 11784/11785
- The MS Cattle Tags are made of polyurethane
- The ear tag can be applied with the MS Cattle Applicator


0402006 MS Tag Medium FDX set
0402007 MS Tag Medium HDX set

Visual and electronic ear tag set for cattle.
Packed in series for easier distribution or management.
Deviating from standard other colors or printing / programming negotiable.
The eartag can be applied using the MS Applicator.

**Characteristics MS Tag Medium FDX-b / HDX set:**

- Dimensions: H x W : 57 x 60,5 mm
- Weight visual set 9,6 grams, transponder set 10,4 grams
- The pin of the male part (length 24 mm) is equipped with a metal point for trouble-free tagging
- The low frequency transponder complies with the ISO Standard 11784/11785
- The ICAR approved transponder has a diameter of 30,6 mm
- The MS Cattle Tags are made of polyurethane
- The ear tag can be applied with the MS Cattle Applicator




0402008 MS Tag Jumbo FDX pair

0402009 MS Tag Jumbo HDX pair

Visual and electronic ear tag pair for cattle.

Deviating from standard other colors or printing / programming negotiable.

Packed in series for easier distribution or management.

The eartag can be applied using the MS Applicator. 

Characteristics MS Tag Jumbo FDX-b / HDX pair:

- Dimension male part 74 x 60,5 mm
- The transponder has a diameter of 30,6 mm
- Weight pair 13,4 gram
- The pin of the male part (length 24 mm) is equipped with a metal point for trouble-free tagging
- The ICAR approved low frequency transponder complies with the ISO Standard 11784/11785
- The MS Cattle Tags are made of polyurethane
- The ear tag can be applied with the MS Cattle Applicator



0402008 MS Tag Jumbo FDX set

0402009 MS Tag Jumbo HDX set

Visual and electronic ear tag set for cattle.

Packed in series for easier distribution or management.

Deviating from standard other colors or printing / programming negotiable.

The eartag can be applied using the MS Applicator. 

Characteristics MS Tag Jumbo FDX-b / HDX set:

- Dimensions: H x W : 74 x 60,5 mm
- Weight visual set 12,6 grams, transponder set 13,4 grams
- The pin of the male part (length 24 mm) is equipped with a metal point for trouble-free tagging
- The low frequency transponder complies with the ISO Standard 11784/11785
- The ICAR approved transponder has a diameter of 30,6 mm
- The MS Cattle Tags are made of polyurethane
- The ear tag can be applied with the MS Cattle Applicator



Microchips (Glas transponders)

0409999 MS Microchip syringe 2x12 mm

MS Microchip syringe has an RFID-chip for use in the electronic identification of pets such as dogs, cats, ferrets and horses.

There are two ways of implantation: subcutaneous and intramuscular.

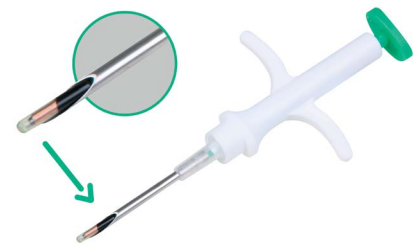
The Luer-Lock needle can be removed separately from the syringe to make it easier to manage waste materials.

Characteristics MS Microchip syringe:

- Disposable, for single use with a microchip for the usage and the application at pets and horses
- Ergonomic
- Made of plastic and high quality steel
- Luer-Lock system to manage the waste materials
- Sterilisation due to ozone treatment
- Anti-drop system that makes sure that the microchip stays in the needle until it is implanted. Guaranteed 100%
- The microchip, with technology FDX-b meets the current rules regarding ISO 11784/5
- Each microchip is covered with parylene, biocompatible anti-migration-material is included
- Chip size: 2 x 12 mm
- Individually, sterile package

The price is per piece. The syringes are supplied in boxes of 10 pieces.

ICAR
APPROVED!



Applicators and spare parts

Visual eartags

0409894 **Applicator For MS Tag**

Applicator for MS Tag made of hard, solid plastic based on 60% glass fibre.



0409824 **Applicator for MS Little Tag eartags**

Applicator with special pin for applying MS Little Tag ear tags. Applicator is made from aluminium and has a stainless steel clamping plate to hold the female part in place. Weight of the applicator is nly 295 gram.



0409302 **MS Tag applicator Pro**

Special developed applicator for the application of transponders or visual tags by adult animals. The space between the applicator and the eartag allows to place the tag at the right spot of the ear.



0409303 **MS Tag applicator for MS Little eartags**

This is the applicator for MS Little ear tags with built in transponder. The applicator's vertical movement ensures that the ear tag is always directly above the female part (with the transponder). In addition, this allows you to apply the tags to older piglets.



Electronic Eartags

0409711 **Applicator for MS Quick E-tags super**

MS Tag applicator, equipped with spring for MS Quick E-tags super and UHF.



0409840 **Applicator for MS Quick E-tags standard**

MS Tag applicator is equipped with an adjustable spring to apply MS Quick E-tags standard or MS Tag Midi transponders.



0409302 **MS Tag applicator Pro**

0409303 **MS Tag applicator Pro for MS Little eartags**

Special developed applicator for the application of transponders or visual tags by adult animals. The space between the applicator and the eartag allows to place the tag at the right spot of the ear.



0409501 **MS Cliptag applicator**

Special developed applicator for the application of the MS Clip EID set.

These "one piece loop" tags can be slip in the applicator easily.

The coloured red fitting implicates placement of the EID transponder side of the tag.



Spare parts

0409712 **Perforation pin quick MStag applicator**

Perforation pin for applicator MS Tag. Improved modell, which ensures that after insertion, the eartag is slipping easily of the perforation pin.



0409823 **Perforation pin Little, plier adjustment**

Special type of perforation pin, which can be used in combination with an applicator to implement a Little eartag.



Marking products

Intermediate plate

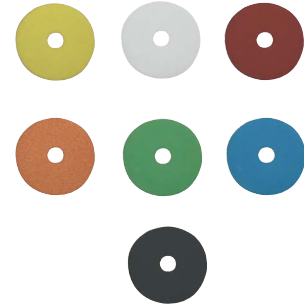
0409825 Intermediate plate 3,8 cm

This intermediate plate is used between the male and female part of an UBN ear tag. In this way, special groups of animals by means of colors are distinguished.

Characteristics:

- Round model
- Made of plastic
- Diameter 3,8 cm
- Packed per 100 pieces

Available in the colours blue, green, red, white, orange, yellow and black.



Marking stick

0304397 MS Marking stick + twist action, plastic.

Marking stick with twist action for marking all species of animals.

Characteristics:

- Reclosable lid prevents dehydration
- Reliable
- Economically advantageous

Available in the colors: red, orange, blue, green, black, yellow and purple.



Marking spray

0301313 MS Spray marker 500 ml

0301314 MS Spray marker 500 ml

0301315 MS Spray marker 500 ml

Spray can for marking or numbering all animals.

Characteristics MS Spray marker:

- No skin irritation
- Quick drying
- Long-lasting
- 100% usable, canister will empty totally

Available in the colours green, red and blue.



0301333 MS Easyspray, 500 ml

0301334 MS Easyspray, 500 ml

0301335 MS Easyspray, 500 ml

Aerosol to mark or number animals.

Characteristics MS Easyspray:

- Gives no skin irritation
- Dries quickly
- Remains visible for a long time
- Can be emptied 100%
- Can be used upside down
- The cap can be secured

Available in the colours green, red and blue.

100%
emptied

Also used
upside down



0303891 red **MS spray marker, 200 ml**
 0303891 gre **MS spray marker, 200 ml**
 0303891 blu **MS spray marker, 200 ml**

Spraycan for marking or numbering all animals.

Characteristics:

- No skin irritation
- Quick drying
- Long-lasting
- 100% usable, canister will empty totally

Available in the colors green, red and blue.



0309920 **MS Longmark Spray 500 ml**
 0309921 **MS Longmark Spray 500 ml**

Marking spray for pigs and cattle. With a spray gun the animal can be marked with the fluid.

Characteristics Marking spray:

- The spray of the fluid is adjustable by turning the nozzle of the spray gun
- In proportion as adjusting the spray of fluid it is possible to mark from different distances (10-100 cm)
- Available in the colors red and blue

Will be delivered excluding spray gun (order separately).



0309922 **Spray Gun For MS Long Markspray**

With a spray gun the animal can be marked with the MS Long mark spray.

Characteristics Spray Gun For MS Long Markspray:

- The spray of the fluid is adjustable by turning the nozzle of the spray gun
- In proportion as adjusting the spray of fluid it is possible to mark from different distances (10-100cm)



0309649 **Spray marker 150 ml for Ingelject automatic marker**

Special spray marker for the Ingelject automatic marker.

Characteristics:

- Harmless to humans and the environment
- Approximately 800 markings per spraycan
- Remains visible for 2 to 3 days
- Capacity 150 ml

Available in the colors red and blue.



0309714 **MS Automatic Vetmarker**

For quick and easy marking of animals.

Characteristics MS Automatic Vetmarker:

- Lightweight
- The 90 cm long handle extends the user's reach
- Labour saving
- It makes clear marks of ± 5 cm \varnothing
- Also easy to draw lines if required



0303007 **Sheep marker spray Cox**

Marking spray Cox is one of the best sheep and lamb markers available.

Characteristics:

- Ideal for grading or recognition of sheep
- Can be applied to wet or dry wool
- Will remain bright even after heavy rain
- Capacity 400 ml

Available in colors: blue, green, orange, purple, red and yellow.



0301255 Comfort spraygun for spray marker

An easy to handle plastic spraygun for marking spray.

Characteristics comfort spraygun for marking spray:

- Easy to click on a spraycan, with keeping clean hands
- Fits also on our blue spray, powder spray and aluminium spray



Neck Straps and Identification numbers

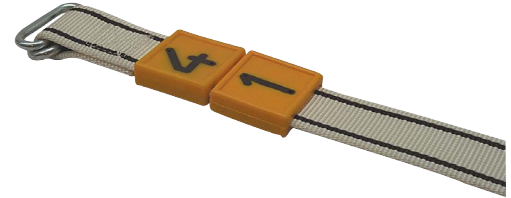
0303332 Numbers for cow identification, single, yellow

Numbers for cow identification for among others the sow/cow strap.

Characteristics:

- Each tile is marked with a 3 cm high number to combine
- The number is impressed into the tile, so that it cannot wear off
- Dimension: 4,5 cm x 4,5 cm

Available in numbers 0 to 9.



1203216 Class A sow/cow neck strap 120 cm

Sow/cow neck strap B/120 cm with buckle.

- Colour: white
- Will be delivered per piece, packed per 10 pieces.

Available in the colors red and blue.



1207840 Class B sow/cow neck strap 120 cm

Sow/cow neck strap B/120 cm with buckle.

- Colour: white.
- Width: 4 cm.
- Will be delivered per piece, packed per 10 pieces.



1201578 Class A Sow Girth-Tether 170cm

170 cm with leather backing and buckle. Order per piece (10 pieces per pack).



1203368 Class A sow girth-tether, 200 cm

Characteristics Sow Girth-Tether:

Class A

Flexible nylon

With leather backing and buckle

Length 200 cm



Ankle Straps

0309987 Clip & click cow ankle strap, blank, plastic

A Clip & Click strap can be fastened on the hind legs of the cow to identify the cows, for instance, those being treated with antibiotics.

Characteristics:

- Made of durable plastic
- Very easy to attach and to remove
- Blank (no numbers)
- Washable material

Available in the colours: yellow, red, blue and green.



0305905 Cow ankle strap, plastic, numbered

Plastic ankle straps for cow identification in for example the milking parlour. A durable product.

Available in the colours blue, green, orange, red and yellow. Please mention, when you place an order, the colour and the number range you wish to receive.

It can have up to 4 printed numbers or letters printed.

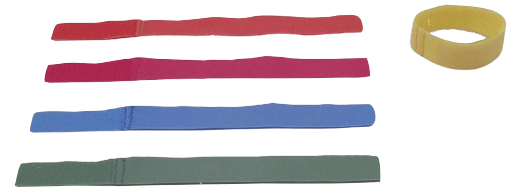


0304273 Cow ankle strap + Velcro

Characteristics cow ankle strap:

- Brightly coloured straps with velcro, for cow identification
- Can be fastened on the hind legs of the cow
- Can also be used, for instance, on cows treated with antibiotics

Available in the colours red, blue, green, yellow and orange.



RFID readers

Handreaders

0402529 Eartag reader APR500-E

0402530 Eartag reader APR 500 kit

The portable ISO RFID reader APR500 combines an alphanumeric keyboard, a graphic display, a large memory and an high connectivity in a very robust IP64 housing. The APR 500 is small enough to fit into a shirt pocket and is very easy to use, even under rough conditions.

The ergonomic alphanumeric keyboard and the large enlightened graphic display with large touch keys offer an easy operation. The memory capacity for 6000 animal numbers is sufficient to work with for more than one day. The data is protected, even when the battery is completely empty.

Ear Tag Reader Differences APR500-E compared with APR500 (0402530):

- APR500-E does not have a Bluetooth module
- APR500-E does not have re-chargeable batteries
- APR500-E Does not have a mains electricity connector, auto-charger or hard shell case
- APR500-E does not have the option to implement the 2013 database function

USB, RS232 and Bluetooth are standard interfaces, which provide a flexible wireless communication.

Technical data:

- Frequency: 134.2 kHz
- Transponder types: HDX compatible (ISO 11784 / 5) FDX-B-compliant (ISO 11784 / 5)
- Reading distance: ± 25 cm with HDX transponder of $\varnothing 30$ mm, ± 20 cm with FDX-B transponder of $\varnothing 30$ mm
- Interfaces: USB with the APC500 of the optional docking station ADS500, RS232 via the APC510 cable, Plug for extern aerial, Bluetooth Class 1 module
- Flash memory: 6000 datasets + task data (depends on the fields defined in the Task)
- Power supply: 2 x 1,5 V AA rechargeable batteries, only provided by Agrident
- Extern power supply via APC500 cable or docking station ADS500
- Protection: IP 64
- Temperature range: -10 to 60 °C
- Dimensions: LxWxH: 175 x 92 x 40 mm
- Weight: about 350 grams
- Approvals: CE and ICAR



0402532 Antenna stick 60 cm APR 500

0402533 Antenna stick 90 cm APR 500

Screw antenna of 90 cm length, which allows to scan the animal with a larger scope and to handle the APR with one hand.



0401385 Dockingstation APR500

Docking station for ear tag reader APR500 that can be connected with the PC. The APR can communicate with the PC when it is in the docking station.



0401391 Belt holster for APR 500

This holster, made from durable nylon is easy to fix on your belt or trousers, by a springy clip. The holster provide easy carrying, the APR always within reach and secures falling out your pocket.



0401388 Battery set APR handheld reader, 2 pcs.

Special rechargeable battery set for the APR handheld reader. Delivered as a set of 2 pieces.



0402575 Quick Transponder Reader Easy

The Quick Transponder reader is a simple reader with outstanding performances. The reader can read transponders of the following types:

- B FDX (ISO-norm)
- A FDX (Destron, Avid, AEG)
- HDX (Texas Tiris)
- EM 4102

Characteristics Quick Transponder Reader:

- Working temperature: 0 °C to + 40 °C
- Display: 2 lines of 16 signs according to one of the six languages
- Power supply: 9 Volt Alkaline or lithium battery of the type PP3
- Scanning distance: 5 to 8 cm (depending on the sort of transponder and the orientation regarding the reader)
- Memory function: Storage capacity: 1000 animal numbers, this can be transferred to a PC or PDA using a RS 232 connection



Stickreaders

0401344 Stick Reader AWR 200 Bt

0401384 Stickreader AWR200 kit

The powerful Stick Reader Agrident AWR 200 is developed for mobile use and for quick and powerful readings in a rough environment like stables, markets and abattoirs.

Characteristics Stick Reader Agrident AWR 200:

- Works under extreme conditions
- Offers a dual power mode, which makes it possible to read the information fast in situations such as at the loading or unloading of animals
- A high read range for all kind of HDX or FDX-B transponders in eartag, ruminal bolus, injectaat, which are compatible with ISO standard 11784/5
- Wireless communication up to 250 meters
- Unique Dual Power mode
- Clear high read range in high power mode
- Operates up to three times longer in low power mode
- Permanent reading mode with animal counter when fast reading is required, e.g. when loading or unloading
- Memory of 5000 ID codes and time indication
- Different animal groups can be registered in the internal memory
- Built-in clock displays date and time
- Communicates wireless via Bluetooth, on this way data is sent from and to a PDA

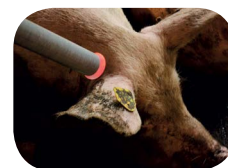
Characteristics:

- Frequency: 134.2 KHz
- Transponder types: HDX compatible (ISO 11784/5) and the FDX-B compatible (ISO 11784/5)
- Reading distance: up to 40 cm (15.75") with HDX eartag, Ø 30 mm transponders, up to 32 cm with FDX-B eartag Ø 30 mm transponders
- Interfaces: AWR 200 with RS232 and with extra ABE100 module bluetooth class A
- Power supply: driven by a NiMH battery 9.6 V/900mAh, optional with RS232 cable
- Visual: coloured LEDs around the end of the stick allows easy operation of the reading process, while horizontally placed 2-line LED display ensure an easy reading of the IDs after scanning
- Battery: rechargeable battery of 16 hours with RS232 cable, in a separate fast docking station it takes - 2 hours
- Operating temperature: -20 to 50°C
- Storage temperature: -20 to 80°C
- Level of protection: IP67
- Weight: Approximately 700 grams for the base unit (excluding battery)
- Approvals: CE, FCC part 15 class A, Canada Industry Standard, CCIA, JRC

The powerful portable **stick reader AWR200** is developed for use in harsh environment, for example in feedlots, auction barns and abattoirs.

Characteristics Stickreader AWR200:

- It is fully ISO 11784/5 compliant and with its very rugged IP67 design it is the right portable RFID reader for the daily work under extreme conditions
- The AWR200 offers some unique features like the dual power mode, the additional read LED at the tip and abi-directional communication via Bluetooth
- Delivered as set, in a hard plastic case, together with a wireless BT printer and required adaptors



Weighing Systems

Automatic weigher "The MS PigScale"

4309731 MS PigScale piglet weigher 4309732 MS PigScale pig weigher

The MS PigScale piglet weigher is a freestanding, mobile scale that pigs can enter independently. The stable weight is stored in the scale and is sent to a server via GPRS (wireless mobile internet). The saved weight data can then be viewed and analyzed on 'My Schippers', a personal page on the MS Schippers website. It's a simple, accurate and reliable plug-and-play system where you can monitor the daily growth data of your piglets or fatteners.

Benefits MS PigScale piglet and pig weigher:

- Fits practically in every pen
- Pigs are automatically weighted, without any extra work from you or stress caused by the pigs
- Actual weighing data give you the possibility, if necessary, to immediately respond and/or adjust your management
- Higher returns through improvement in body weight!

Specifications MS PigScale piglet weigher:

- Length: 95 cm
- Width: 35 cm
- Height: 63 cm
- Weight: 34 kg

Specifications MS PigScale pig weigher:

- Length: 130 cm
- Width: 56 cm
- Height: 120 cm
- Weight: 60 kg

When purchasing the MS PigScale, the Communication module (4309733), the corresponding data plan, also needs to be concluded at a fixed monthly fee.

This MS PigScale is also available in a rental version. Ask your representative about the options.





Gold Medal Winner EuroTier

Welcome to the demo page for the MS PigScale

The MS PigScale is an intelligent weighing system that pigs enter voluntarily and independently. Real-time data from an MS PigScale in actual use is shown below.



Select MS PigScale: Change name

Select round: Change name

Compare to round: Diff

Export results to Excel Add remark to round

MS PIGSCALE STATE :

MS PigScale ID : 00.00.00.00.01

Number of days in actual round : 41 days

Current weight : 26.93 kg

Start/end date round : 23-07-2014 - 03-09-2014

Age at the start of the fattening period : 30 days

Date at the start of the fattening period : 23-07-2014

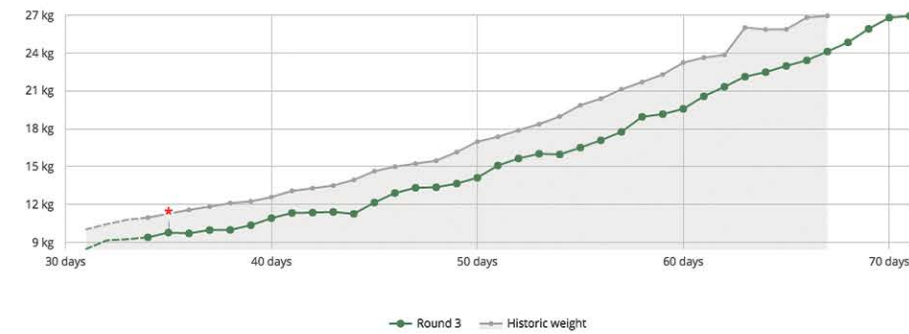
Malfunction email address : *to be filled*

Growth of the piglets

Last day	130 gram
Average weight this round	465 gram
On average in the selected range	465 gram

Weight graph

Here you can compare the results of the selected MS PigScale with the previous round(s).



Select range

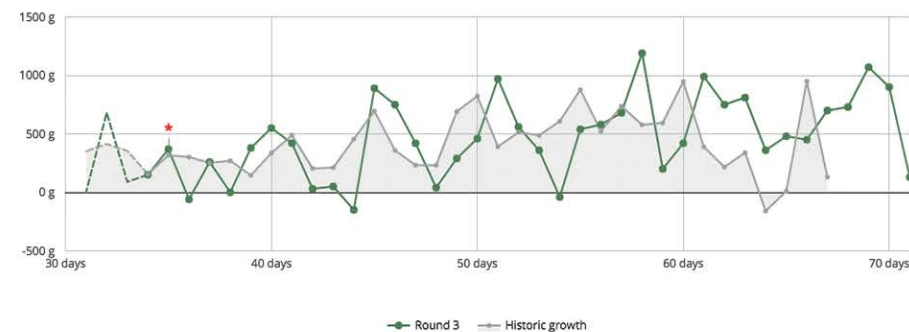
Select the range (in days from start of finishing) that you want to appear in the charts.

Range: 31 - 71 days



Weight growth graph

Here you can compare the results of the selected MS PigScale with the previous round(s).



Mobile weighers

4309966 MS scale easy mobile piglet weigher

With this MS Easy Scale mobile piglet weigher it is possible to weigh a group of pigs before it will be sold or transported.

Characteristics MS Easy Scale mobile piglet scale:

- Special weighing electronics for moving animals
- Made out of aluminium
- Maximum weighing capacity of 1000 kg
- Easy to transport
- Length:
 - 235 cm
 - 250 cm with wheels and handles
- Height:
 - 80 cm
 - 100 cm, including a display
- Width inside:
 - 0.82 m
 - outside: 0.90 m

Important facts:

- Performance in detail: MS Scale Easy mobile weighers
- Both entry and exit gates operated by a lever conveniently located at each end.
- Smooth surfaces and lack of inaccessible areas allow for easy cleaning
- Patent applied for.
- Solid rubber wheels at the front and handles at the rear allow easy wheelbarrow-like handling.
- The very low floor height above the ground of only 7 cm along with the specially designed closed, yet light side panels and openview at front encourages easy access for pigs.
- Light aluminium construction, total weight less than 50 kg
- All cables protected by rails.
- Robust, impact resistant weighing bar
- Weighing range up to 1,000 kg
- Weighing booth sealed, completely waterproof
- Clear, easily readable display
- Lock function for moving animals (steady display)
- Automatic re-tare, e.g. upon soiling
- Waterproof, foil keyboard protected against rigorous use
- Easy handling for highest operational safety
- Power supply from integrated battery
- Also available with calibratable equipment authorised by EC boards of weights and measures



4309763 MS EasyScale Pro Select 2.0

The MS Easy Scale Pro Select weighing system is a digital and mobile weighing unit specially designed for weighing gilts, fattening pigs and veal calves. The scale is very useful for the gilt selection. The sides are equipped with bars, so there is a good view on the animal. The open nature of the scale enables easy access for animals and also making it easier to assess teat selection.

The weighing computer can pair with the Psion or APR 500 handheld readers by means of the bluetooth wireless option. After scanning the electronic ear tag of the animal, the weight can be retrieved and stored quickly and easily with the reader. Reading ear tags and / or erroneous writing of the data is not possible anymore.

Advantages:

- Durable stainless steel housing of the weighing indicator
- The heavy internal battery makes it easier to control
- Integrated system for the opening and closing of the spout
- Bluetooth connectivity of the weight indicator to the PDA or APR handheld reader.
- Reading the ear tag and typing over of weights, is unnecessary!
- Comes with wheels making it portable and easy to use

Characteristics MS EasyScale Pro Select:

- Weighing electronics specially designed for moving animals
- Automatic correction for contamination of the weighing cell weighing unit
- Large and bright display for clear and easy reading of the data
- Completely made of aluminum
- Easy to carry around like a wheelbarrow
- Very easy to operate
- Puts itself in seconds to 0 when the pig leaves the scales
- Maximum weight capacity: 300 kg
- Comes with powerful battery and AC adapter

Dimensions:

- Weight: 50 kg
- length outside:
 - 165 cm with handles
 - inside 143 cm
- Width:
 - 70 cm with wheels
 - 58 cm without wheels
 - 49 cm inside
- Height:
 - 132 cm with display
 - inside 92 cm



Bluetooth®



4309880 MS Easy Scale, digital mobile scale

Using this MS Easy Scale, you can weigh every animal separately, which improves the management in the pig farm. The weight classes are getting closer and the selecting pigs has become an important job. The mobile, digital weighing unit makes the weighing part easier for the pig as well as for the user. The pigs do not have to leave their cage, resulting in the fact that there is no stress while weighing. It is also more hygienic because the corridor does not get dirty. The animal cage scale is easy to enter for pigs, due to the very low threshold and the fully closed sides.

Characteristics MS Easy Scale:

- Weighing electronics specially for moving animals
- Automatic weighing correction when the mobile weighing unit is polluted
- Big and clear display to read the data clearly
- Completely made out of aluminium
- Easy to transport like a wheelbarrow
- Very easy to operate
- Weighing scale sets itself within a few seconds tared on 0, when the pig leaves the weighing scale
- Maximum weighing capacity: 1000 kg
- Is delivered with 4 batteries + 1 charger with power cord

Dimensions:

- Weight: 49 kg
- Length:
 - 150 cm without wheels and handle
 - 175 cm including wheels and handle
- Width: 58 cm
- Height:
 - 100 cm without display
 - 120 cm including display



4309764 MS EasyScale Pro Sow 2.0

The MS EasyScale Pro Sow is a digital and mobile weighing unit specially designed for sows, bigger gilts and groups of piglets.

It is easy to use both for the pig and for the user. Due to the open structure (the sides are equipped with bars) it enables an easy access for animals and the sow's and gilts teats can be assessed properly.

Advantages:

- Durable stainless steel housing of the weighing indicator
- The heavy internal battery makes it easier to control
- Integrated system for the opening and closing of the spout
- Bluetooth connectivity of the weight indicator to the PDA or APR handheld reader. Reading the ear tags and typing over of weights is unnecessary
- Comes with wheels making it portable and easy to use

Characteristics MS EasyScale Pro Sow:

- Weighing electronics specially designed for moving animals
- Automatic correction for contamination of the weighing cell weighing unit
- Large and bright display for clear and easy reading of the data
- Completely made of aluminum
- Easy to carry around like a wheelbarrow
- Very easy to operate
- Puts itself in seconds to 0 when the pig leaves the scales
- Maximum weight capacity: 700 kg
- Comes with powerful battery and AC adapter

Dimensions:

- Exterior dimensions: 2.35 x 0.85 x 1.44 m (l x w x h)
- Interior dimensions: 2.15 x 0.68 x 1.24 m (l x w x h)
- Weight: 65 kg



Bluetooth®



Group weighers

- 4305420 MS EasyScale Pro Group 3,10 x 1,10 m**
- 4305421 MS EasyScale Pro Group 3,10 x 1,40 m**
- 4305422 MS EasyScale Pro Group 3,10 x 1,80 m**
- 4305423 MS EasyScale Pro Group 4,10 x 1,10 m**
- 4305424 MS EasyScale Pro Group 4,50 x 1,40 m**
- 4305425 MS EasyScale Pro Group 4,50 x 1,80 m**

The MS EasyScale Pro Group is an high quality electronic weighing platform, which distinguishes itself through its easy and convenient handling. Several innovative and smart parts in this weighing system ensure that the stress in humans and animals is reduced to a minimum. The weighing system has an aluminum structure and the panels on the sides are made of PVC.

Characteristics MS EasyScale Pro Group:

- 40 mm thick removable PVC panels
- Smooth action doors with automatic locking
- Exit can be opened easily with a foot pedal
- The display is clear and easy to read
- Special weighing electronics for moving animals
- Automatic terra weighing in a contaminated scale
- Extremely solid aluminum construction
- Aluminum base with non-slip profile
- Easy to clean due to smooth surfaces
- Easy access due to the low entry of only 2 cm
- 4 stainless steel load cells with a maximum payload of 4000 kg
- Possibility to add the total weights
- Strong durable battery
- Bluetooth functionality for communication with PDA
- Delivered as a kit and easy to assemble
- Possibly moveable through a special rod



4309980 Rod for MS EasyScale Pro Group

Rod for moving the MS EasyScale Pro Group through, for example, the central alley in the barn.



4309607 Complete weighing beam set, length 120cm

4309608 Complete weighing beam set, length 150cm

4309609 Complete weighing beam set, length 200cm

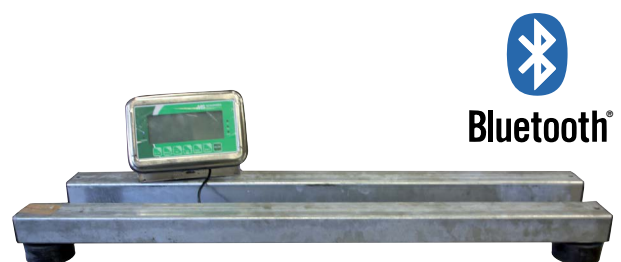
Robust set of weighing beams made of galvanized steel. The 4 internal load cells provide perfect weighing and guarantee a long life. Perfect solution for those who want to build a weighing system themselves.

Characteristics weighing beams:

- Per beam a weighing capacity of 1000kg (total capacity weighing system set is 2000kg)
- Plated contacts
- Waterproof and shockproof housing
- Protected polyurethane cable for maximum protection against FRI, EMI and lightning exposure
- Suitable for the JD II, BWVS and many other display models
- 10.5 cm high from the ground
- Height beam: 6 cm
- Width beam: 8 cm
- The rubber feet are 4.5 cm high
- Adjustable to specific situation or application
- Standard available in three widths

The set comprises:

- 1 x Galvanised weighing beam set (2 beams)
- Modi-adapter
- 1 x BWS indicator
- Calibrated and tested





Schippers Export BV

Rond Deel 12

5531 AH Bladel

The Netherlands

Tel: +31(0)497-339774

Fax: +31(0)497-339779

export@msschippers.com

www.msschippers.com

MS Animal ID

Passion for Farming